



SM20 SM26

Cold Beverage Merchandisers



Operator's Manual

Seaga Manufacturing, Inc.
700 Seaga Drive
Freeport, IL USA 61032
www.seagamfg.com

INTRODUCTION

Congratulations on the purchase of your new Cold Beverage Merchandiser. The SM20 and SM26 have been designed to give you many years of dependable service. Your unit requires little maintenance and is easy to set up and operate.

READ THIS MANUAL COMPLETELY

Your SM20 or SM26 is designed to operate simply and reliably, but to take full advantage of your vendor, please read this owner's manual thoroughly. It contains important information regarding installation and operations, as well as a brief troubleshooting guide.

EQUIPMENT INSPECTION

After you have received your SM20 or SM26 and have it out of the box, place it on a secure surface for further inspection. **Note:** Any damages that may have occurred during shipping must be reported to the delivery carrier immediately. Reporting damages and the seeking of restitution is the responsibility of the equipment owner. The factory is willing to assist you in this process in any way possible. Feel free to contact our Customer Care Department with any questions you may have on this process.

Once you have your unit located, we suggest that you keep this manual for future reference, or you can view this manual online at www.seagamfg.com. Should any problems occur, refer to the section entitled "COMMON QUESTIONS AND ANSWERS". It is designed to help you quickly identify a problem and correct it.

MANUFACTURER'S WARRANTY

WHAT IS COVERED: Manufacturer warrants TO THE ORIGINAL PURCHASER ONLY that each item of equipment manufactured is free from defects in material and workmanship under normal use and service. Manufacturer's obligation under this warranty shall be limited to repair or replacement, at our plant, of any parts of the equipment which shall, within one year of the date of shipment to the original purchaser, be demonstrated to be defective. The original purchaser may obtain repair or replacement of the equipment under this warranty by returning the defective item or entire vendor to the Manufacturer, freight prepaid.

WHAT IS NOT COVERED: Manufacturer's warranty obligations DO NOT EXTEND TO OR INCLUDE installation expenses, vandalism, or difficulties resulting from failure to operate equipment in accordance with Manufacturer's instructions under competent supervision and difficulties due to changes in vended products which are beyond the control of Manufacturer.

SPECIAL NOTE: Manufacturer is not responsible for any loss of income due to a vending machine being out of service due to a warrantable item.

This warranty is in lieu of all other warranties, expressed or implied, including the warranty of merchantability and fitness or use, and of all other obligations or liabilities on Manufacturer's part. Manufacturer neither assumes, nor authorizes any other person to assume for it, any other liability in connection with the sale of equipment manufactured by itself. This warranty shall not apply to equipment manufactured or any part thereof which is subject to accident, negligence, alteration, abuse, misuse or damage in shipment. The term "original purchaser," as used in this warranty, shall be deemed to mean that person for whom the equipment is originally installed.

Manufacturer is not liable for any incidental, consequential or other damages of any kind whatsoever, directly or indirectly, arising from the use of the equipment whether based upon theories of contract negligence or tort.

Effective 9/01

For Technical Support & Service

Contact our Customer Care Dept.

8:30 a.m. - 4:00 p.m. CST. Mon thru Fri

815.297.9500 ext 160

815.297.1758 Fax

email: customercare@seagamfg.com

For Parts

Contact our Parts Dept.

8:30 a.m. - 4:00 p.m. CST. Mon thru Fri

815.297.9500 ext 160

815.297.1758 Fax

email: parts@seagamfg.com



Seaga Manufacturing, Inc.

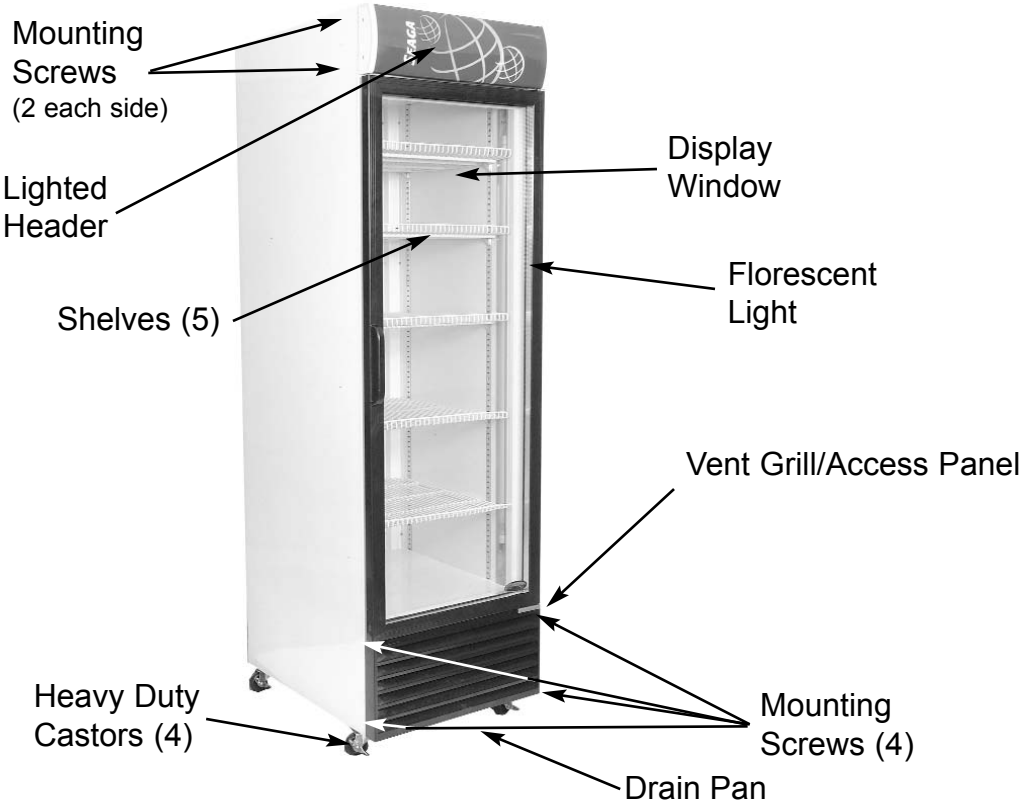
700 Seaga Drive

Freeport, IL 61032 U.S.A.

Online: www.seagamfg.com

SM20 SM26
Cold Beverage Merchandiser

(Model SM20 shown)



Interior

Light Controls (Interior and Header)
Temperature Control



INTRODUCTION

This manual covers both the SM20 and the SM26 VisiCoolers. With the exception of size, the machines are identical.

PLACEMENT

It is important to select the proper location for your SM20/SM26, it should be placed away from direct sunlight and sources of heat. Please leave 6" of clearance behind the unit to allow free air circulation. Four heavy duty castors are installed in the base of the unit, two can be locked. You will want your SM20/SM26 to be as level as possible. The unit is for indoor installation only.

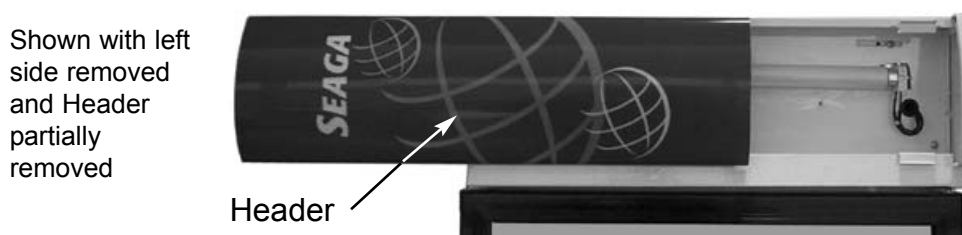
DISPLAY LIGHTING

The SM20/SM36 features a Lighted Header. The Lighted Header has a factory installed bulb. A replacement bulb can be obtained by contacting Seaga's Customer Care department (see Page 2).

1.) To replace the bulb.

- A.) Turn off the lamp using the top Lamp On/Off switch found inside the SM20 / SM26 (see page 3).
- B.) Using a Phillips screwdriver, remove the two (2) mounting screws from left side of the Lighted Header and remove the side.
- C.) Grasp the Header and carefully pull to the side to free. (Fig. 1)
- D.) Remove the old bulb and replace.
- E.) Reassemble.

Figure 1 Lighted Header



INTERIOR LIGHTING

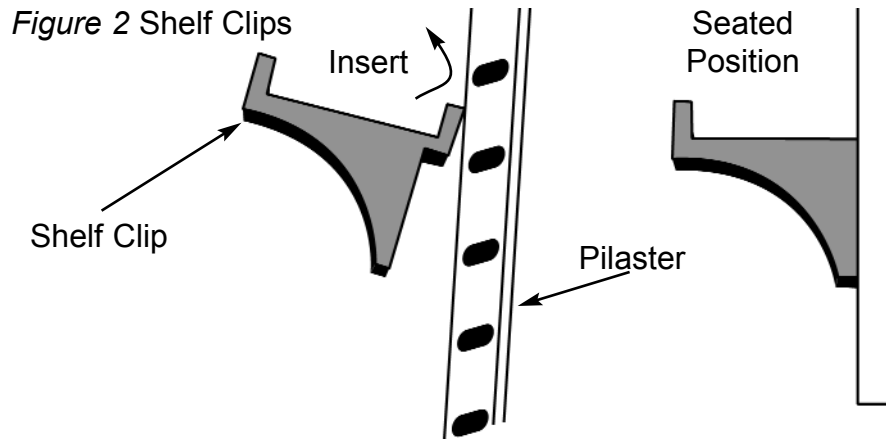
The SM20/SM26 has a factory installed bulb. The lamp can be turned on or off by pressing the Lamp On/Off switch in the front interior of the SM20/SM26 (see Page 3). A replacement bulb can be obtained by contacting Seaga's Customer Care department (see Page 2).

1.) To replace the bulb.

- A.) Turn off the lamp using the Lamp On/Off switch found on the front interior of the SM20/SM26.
- B.) Remove all product.
- C.) Remove all shelves.
- D.) Using a Phillips screwdriver, remove the two (2) screws from the lens cover, one (1) at the top and one (1) at the bottom. Remove the lens cover.
- E.) Remove the old bulb and replace.
- F.) Reassemble.

SHELVES

Your SM20/SM26 comes with five (5) Heavy-Duty Epoxy Coated Steel Shelves. Extra shelves can be ordered from the Parts Department. Shelf placement will vary depending on the size of the products displayed. To maintain efficient cooling, equal spacing should be maintained between shelves. Taller product will require more space than shorter product.



There are four (4) Shelf Clips per Shelf. You will find the Shelf Clips in the hardware bag inside your vendor.

To install the Shelf Clips (Fig. 2):

- A.) Tip the shelf clip back toward the pilaster
- B.) Insert back retainer into slot of pilaster
- C.) Tip shelf clip down into seated position

DRAIN PAN

The Drain Pan allows normal condensation to be captured rather than soil the location. Remove the Drain pan from inside the unit and slide it into the Drain Pan Holder under the cabinet. Under normal conditions the contents of the Drain Pan should evaporate and the Drain Pan should not need to be emptied.

ELECTRICAL CONNECTIONS

Your SM20/SM26 requires a grounded outlet. It is not recommended that the ground be bypassed to allow the unit to be plugged into a two-prong outlet.

The SM20/SM26 requires one (1) 120 VAC grounded outlet.

SM20/SM26 120 Volts 50-60 HZ 6.5 Amps

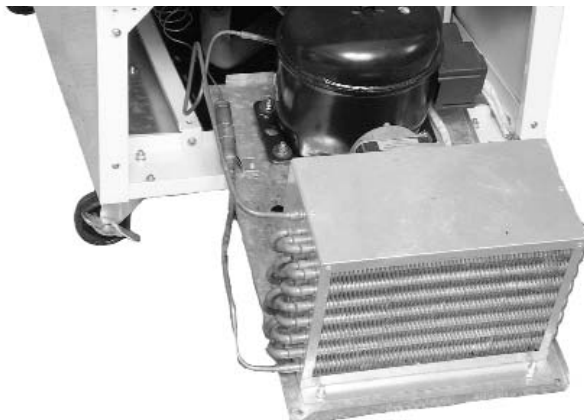
TEMPERATURE SETTING

The SM20/SM26 is factory set to provide your customers with an ice cold and refreshing product. The SM20/SM26 should be plugged in and allowed to run for 24 hours before making any temperature adjustments. Product stored in your SM20/SM26 will be at temperature after 10 hours of storage.

REFRIGERATION SYSTEM ACCESS

There are times when you may need to access the refrigeration System. Remove the four (4) mounting screws and pull the System Access Panel straight out.

Figure 3 System Access Panel Open



COMMON QUESTIONS AND ANSWERS

Q: My SM20/SM26 is not getting cold enough, no matter where the temperature control is set.

A: Has the unit been running for more than 24 hours?
Make sure the unit is away from direct sunlight and heat sources.
Check for an air leak in the door seal.
Make sure the electrical outlet is providing consistent power.
The Thermostat may not be working properly.
Compressor may be undercharged with R134a.
Contact Customer Care.

Q: Water is dripping onto the floor.

A: Check to make sure the Drain Pan is installed properly under the unit.
Check for leaking product.

Q: Why doesn't the Compressor cycle, or why is my Compressor making noise but the product is not getting cold?

A: Thermostat may not be working properly.
The vendor may have been unplugged, and plugged back in too quickly. Unplug vendor for 12 hours and plug back in.
The system may be too cold or frozen. Turn the Thermostat completely counter-clockwise. Open or leave the Front Door ajar overnight to thaw the evaporator coil. On the next day turn your Thermostat to 3 and check for proper cooling.
Compressor may be defective.

Q: Why is my unit freezing my product no matter where the thermostat is set?

A: The Thermostat may be stuck open. In this case turn the Thermostat completely counter-clockwise. The Unit should shut off. If it does not, then the Thermostat needs to be replaced.

Q: My product was really cold, and now my unit is not cooling.

A: The Compressor may be frozen. Turn the Thermostat completely counter-clockwise. Leave the SM20/SM26 off overnight to thaw the system. On the next day turn your Thermostat to 3 and check for proper cooling.

Q: The light does not come on.

A: Make sure the light is turned on.
Change the light bulb.
Make sure the electrical outlet is providing consistent power.
Contact Customer Care.

Q: The light will not go out.

A: Contact Customer Care.